

1200 / F1200

Surface Vertical Rod Devices

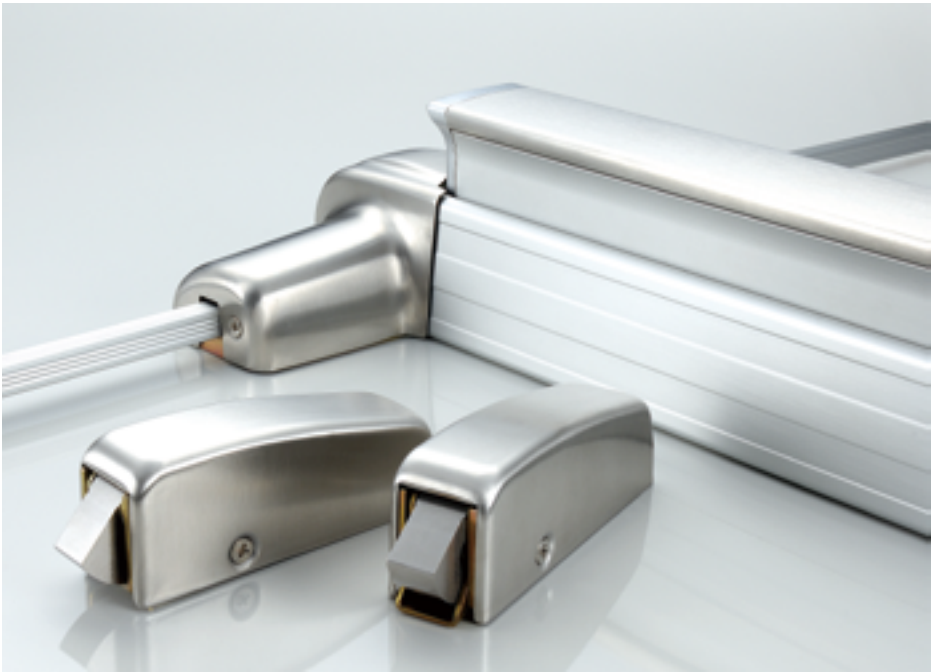


Applications

- Offices, schools, banks, assisted living facilities and other institutions or commercial buildings.

Doors & Preparations

- For all types of single and double doors.
- For new or retrofit installation into other manufacturers' devices.
- For doors 1-3/4" to 2-1/4" thick, up to 4' wide opening and up to 10' high; for thicker doors, consult factory.
- Furnished Standard for 1-3/4" thick, 3' wide opening and 7' high doors.
- For maximum door opening applications and listings for Fire Exit Devices, see page 45.



Specifications

Certification/Compliance	<ul style="list-style-type: none">• Panic devices UL/cUL listed for UL305 and ANSI/BHMA A156.3 Grade 1 Panic Hardware.• UL/cUL Fire rated for 3-hour Fire Exit Hardware, conforms to UL10C and UBC7-2. Also complies with NFPA 80 Fire doors and windows.• Exit devices, levers, trims and pulls comply with American Disability Act (ADA) and NFPA 101 life safety code.	
Center Case	<ul style="list-style-type: none">• Heavy wrought steel assembly with top and bottom rod adjusters.• Adjustment accessible through center case after installation.	
Vertical Rods	<ul style="list-style-type: none">• 1/2" Square tubing, standard rods accommodate 7' (2134mm) door.• Top rod length is 36-1/8" (916mm) Bottom rod length is 31-7/8" (807mm) standard.• Top rod length 48-1/8" (1221mm) is available for 8' (2438mm) door.• Extension rod available 24" (609mm) for doors ranging between 8' and 10' high. Specify when ordering. For rod size, see page 34.	
Top Latch Bolt	<ul style="list-style-type: none">• Stainless Steel, Pullman type deadlocking, 5/8" (16mm) throw.	
Bottom Bolt	<ul style="list-style-type: none">• Stainless Steel, Pullman type deadlocking, independent action 5/8" (16mm) throw.• Round Slide Bolt optional.	
Top & Bottom Latch Case	<ul style="list-style-type: none">• 4-1/2" x 2-1/8" x 1-1/2" (114mm x 54mm x 38mm).	
Door Undercut	<ul style="list-style-type: none">• 1/4" (6mm).	
Strikes	Panic Top: P/N. 106 (roller type) Bottom: P/N. 227 See page 25.	Fire Top: P/N. 108 (roller type) Bottom: P/N. 227F See page 25.
Dogging	<ul style="list-style-type: none">• NOT available on Fire Exit Hardware.• Dogging options available for LD, CD, ED (ELR). See page 32.• Flat/Hex key dogging standard.	
Fasteners	<ul style="list-style-type: none">• Machine screws and wood screws are furnished standard.	
Sex Bolts (SNB)	<ul style="list-style-type: none">• Required when used with wood, composite or non-reinforced hollow metal doors. For Exit Only device, specify 6-1024 SNB (No. 10-24). 4-4120 SNB (No. 1/4-20). For device with trim, specify 2-1024 SNB (No. 10-24). 4-4120 SNB (No. 1/4-20). See page 9.	
Electrical Functions	Can be interfaced with building security systems: <ul style="list-style-type: none">• AL Alarm Exit• DE Delayed Egress Device• ELR Electric Latch Retraction• LM Latch Bolt Monitoring• RX Request to Exit• SS Signal Switch See page 37.	
Device Centerline from Finished Floor	<ul style="list-style-type: none">• 39-5/8" (1006mm).	
Fire Bolt (LBR)	<ul style="list-style-type: none">• Available for door openings up to 8' wide x 10' high. Specify suffix "LBR".• Fire bolt is heat activated - used in less bottom rod (LBR) option for fire exit devices.	
Handing	<ul style="list-style-type: none">• Trim field reversible.• Device non-handed.	
Cylinders	<ul style="list-style-type: none">• NOT furnished standard, specify when required. For Cylinder details, see page 31.	
Trim	<ul style="list-style-type: none">• The device & trim are sold separately, easy to mix and match, see page 21.	

